

Observational signatures of shocks in flares

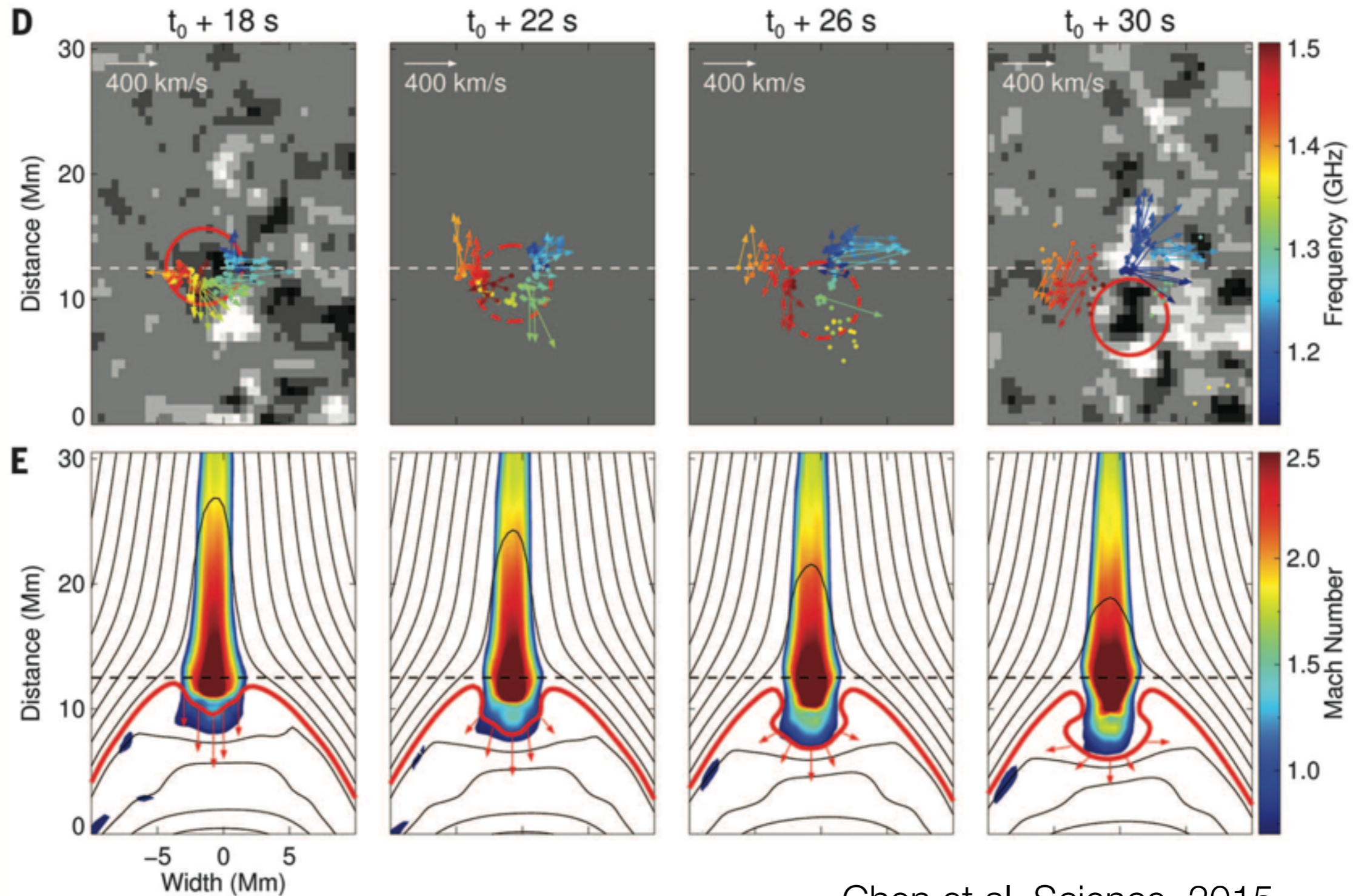
Tuesday 9:45 - 12:45

Organizers: Kathy Reeves (SAO), Gang Li (UAH)

What are the observational signatures of the termination shock in flares?

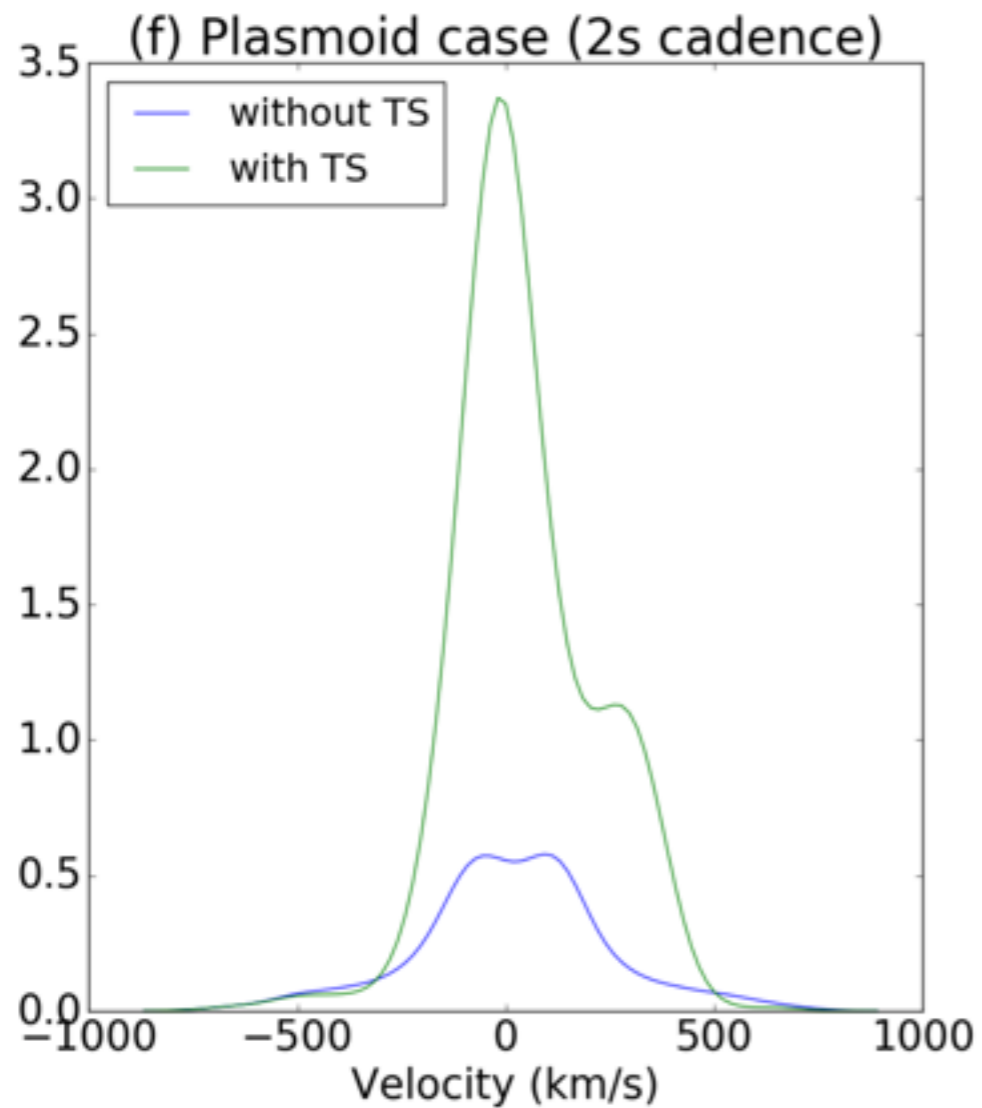
- Can we obtain unambiguous signatures of shocks from spectral lines? What are the "smoking guns" we are looking for?
- How does the shock orientation (e.g. limb event and disk event) affect the "searching"?
- What about recent observations in the radio (i.e. Chen et al., Science, 2015)
- What observations are needed to differentiate between different models of shock acceleration and heating in flares?

Termination shock disrupted by downflows?

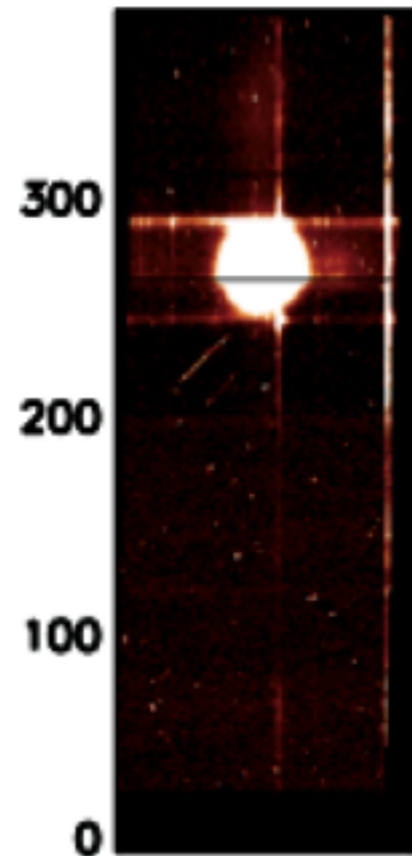
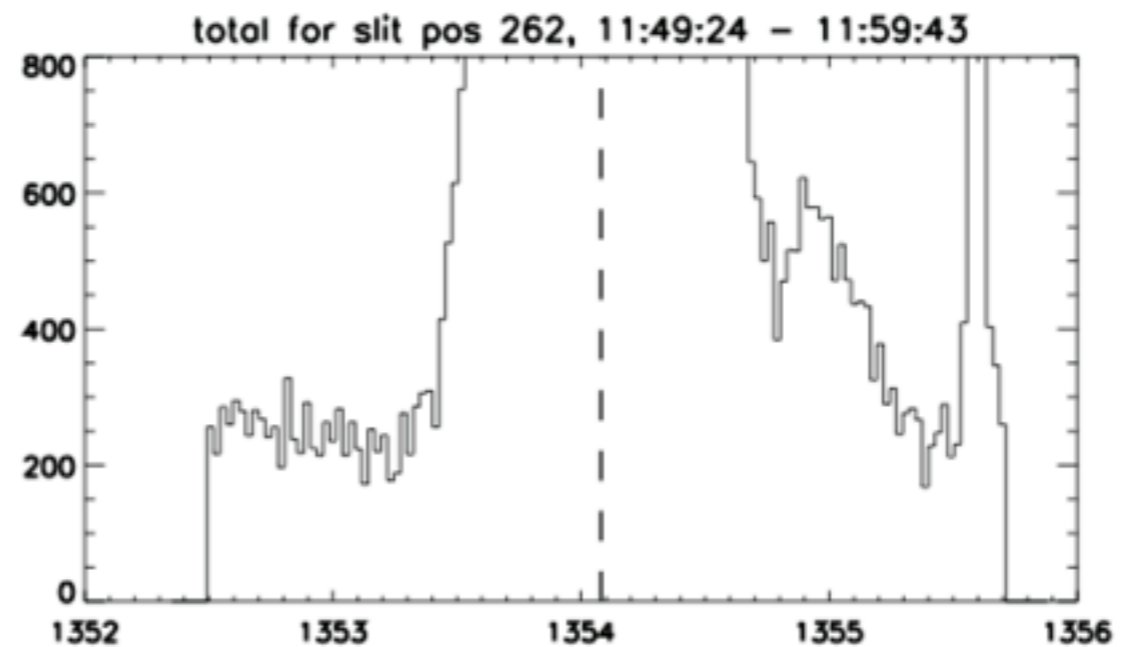


Chen et al. Science, 2015

Speculative example: IRIS Fe XXI profiles



Guo, L. et al. in prep



Quick and dirty IRIS data from 20150312 flare
courtesy Giselle Galan

Invited speakers

- Tim Bastian (NRAO): Termination Shocks: Are They a Thing?
- Gang Li (for Lijia Guo, LMSAL): Solar flare termination shocks and synthetic emission line profiles

Session 6: Observational signatures of shocks in flares
Tuesday 9:45 - 12:45